

Spectrum Series Dimensions Table

Unit: mm

Model Number	Nominal Diagonal	Case Length (A)	View Width (A1)	Screen Width (A2)	Screw Hole Distance (A3)	Weight Bar Length (A4)	Overall Height (B)	View Height (B1)	B2	B3	End cap Height (B4)	Top Black Border (B5)	C1	End cap Width (C2)	Power Cord Length (D)
Electric84H	2133	2168	1860	1936	2113	2016	1402	1046	1309	60	93	203	17	80	1800
Electric100H	2540	2544	2214	2314	2489	2394	1551	1245	1458	60	93	152	17	80	1800
Electric100H-A1080P2	2540	2544	2214	2314	2489	2394	1551	1245	1458	60	93	152	17	80	1800
Electric110H	2794	2773	2435	2535	2718	2615	1726	1370	1633	60	93	203	17	80	1800
Electric125H	3175	3103	2769	2869	3048	2956	1846	1557	1753	60	93	203	17	80	1800
Electric125H-A1080P2	3175	3103	2769	2869	3048	2956	1846	1557	1753	60	93	203	17	80	1800
Electric150H	3810	3622	3321	3421	3567	3501	2135	1868	2030	60	105	102	17	88	2500
Electric180H	4572	4276	3985	4085	4221	4165	2559	2242	2454	60	105	152	17	88	2500
Electric84V	2133	2016	1707	1783	1961	1863	1636	1280	1543	60	93	203	17	80	1800
Electric100V	2540	2366	2032	2132	2311	2212	1804	1524	1711	60	93	127	17	80	1800
Electric120V	3175	2773	2438	2538	2718	2618	2083	1829	1990	60	93	102	17	80	1800
Electric85X	2159	2140	1831	1907	2085	1987	1399	1144	1306	60	93	102	17	80	1800
Electric90X	2286	2248	1939	2015	2193	2095	1466	1212	1373	60	93	102	17	80	1800
Electric106X	2692	2618	2283	2383	2563	2463	1682	1427	1589	60	93	102	17	80	1800
Electric128X	3251	3091	2756	2832	3036	2937	1978	1723	1885	60	93	102	17	80	1800
Electric142X	3606	3360	3059	3159	3305	3239	2686	1912	2581	60	105	102	17	80	2500

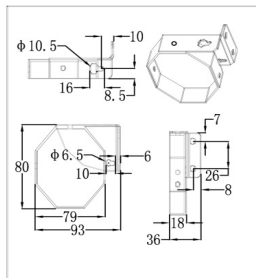
Unit: Inch

Model Number	Nominal Diagonal	Case Length (A)	View Width (A1)	Screen Width (A2)	Screw Hole Distance (A3)	Weight Bar Length (A4)	Overall Height (B)	View Height (B1)	B2	B3	End cap Height (B4)	Top Black Border (B5)	C1	End cap Width (C2)	Power Cord Length (D)
Electric84H	84.0	85.4	73.2	76.2	83.2	79.4	55.2	41.2	51.5	2.4	3.7	8.0	0.7	3.1	70.9
Electric100H	100.0	100.2	87.2	91.1	98.0	94.3	61.1	49.0	57.4	2.4	3.7	6.0	0.7	3.1	70.9
Electric100H-A1080P2	100.0	100.2	87.2	91.1	98.0	94.3	61.1	49.0	57.4	2.4	3.7	6.0	0.7	3.1	70.9
Electric110H	110.0	109.2	95.9	99.8	107.0	103.0	68.0	53.9	64.3	2.4	3.7	8.0	0.7	3.1	70.9
Electric125H	125.0	122.2	109.0	113.0	120.0	116.4	72.7	61.3	69.0	2.4	3.7	8.0	0.7	3.1	70.9
Electric125H-A1080P2	125.0	122.2	109.0	113.0	120.0	116.4	72.7	61.3	69.0	2.4	3.7	8.0	0.7	3.1	70.9
Electric150H	150.0	142.6	130.7	134.7	140.4	137.8	84.1	73.5	79.9	2.4	4.1	4.0	0.7	3.5	98.4
Electric180H	180.0	168.3	156.9	160.8	166.2	164.0	100.7	88.3	96.6	2.4	4.1	6.0	0.7	3.5	98.4
Electric84V	84.0	79.4	67.2	70.2	77.2	73.3	64.4	50.4	60.7	2.4	3.7	8.0	0.7	3.1	70.9
Electric100V	100.0	93.1	80.0	83.9	91.0	87.1	71.0	60.0	67.4	2.4	3.7	5.0	0.7	3.1	70.9
Electric120V	125.0	109.2	96.0	99.9	107.0	103.1	82.0	72.0	78.3	2.4	3.7	4.0	0.7	3.1	70.9
Electric85X	85.0	84.3	72.1	75.1	82.1	78.2	55.1	45.0	51.4	2.4	3.7	4.0	0.7	3.1	70.9
Electric90X	90.0	88.5	76.3	79.3	86.3	82.5	57.7	47.7	54.1	2.4	3.7	4.0	0.7	3.1	70.9
Electric106X	106.0	103.1	89.9	93.8	100.9	97.0	66.2	56.2	62.6	2.4	3.7	4.0	0.7	3.1	70.9
Electric128X	128.0	121.7	108.5	111.5	119.5	115.6	77.9	67.8	74.2	2.4	3.7	4.0	0.7	3.1	70.9
Electric142X	142.0	132.3	120.4	124.4	130.1	127.5	105.7	75.3	101.6	2.4	4.1	4.0	0.7	3.1	98.4

The listed measurements are for general reference only. Please contact Elite Screens to verify product design and dimensions before attempting to integrate its products with any structural or furniture modification. Although a manufacturer may offer product advice, it may be taken or disregarded at the integrator's discretion. Elite Screens will not be held responsible or be otherwise liable for faulty installations.

Note: Data Error may be ±1"

end cap for
84" - 128" sizes



Unit of measure: mm

end cap for
135" - 180" sizes

